

Comments on the Beauceron Standard

The following are comments written by M. Maurice Hermel for the FCI Standard #44 published on 10/25/06. They were approved by the Club des Amis du Beauceron (CAB) board at the Nationale d' Elevage.

M. Hermel is the head of CAB's Judges Committee (in charge of educating aspiring judges) and was the conformation judge at our 2007 Journée du Beauceron. His comments were translated by C. Batson

I. Main Points

The Beauceron is not a heavy dog. Many judges often tend to forget this, confusing power (one of the breeds traits) and heaviness. It is the dog seen on the logo of the Club des Amis du Beauceron that we must keep in mind when we evaluate the breed.

That is to say:

- Strong skeleton regardless of gender
- Top line perfectly straight
- Underline showing a good profile with the abdomen slightly drawn up
- Neck is well defined with an upright carriage
- Shoulder joint well defined

This last trait gives the dog elegance –despite his power- and goes hand in hand with an excellent angulation of the shoulder and arm. If this angle is too straight, the shoulder joint is pushed backward, the forearm is too vertical, the shoulder blade is higher, the neck is pushed forward and the dog loses its nobility. The head carriage becomes mediocre.



Club des Amis du Beauceron (CAB) logo

These points must be present in the general appearance of the dog within the standard (it is often said that the dog is a whole and that the first glance often brings the final judgment!)

II. The Head

Once more, we must never forget that: “The breed shows in the head and that all the rest follows.” (P. Megnin, 1899, one of the most famous zoologists in the world.)

The head must be without fault for the dog to be rated excellent even if the rest of the body is excellent.

The head is the last refuge of the breed’s type. The standard describes it very well, but we must specify that the head must be:

- Chiseled with dry lips
- Skin is tight on the skull
- Eyelids and orbit area not thick
- Eyes must not appear swollen or “Chinese”
- No dewlap
- Lips and eyelids must be pigmented

III. Chiseling

It is very important that the under orbital area be well chiseled and dry.

The head is made of two rectangular parallelepipeds fitted into one another, the bigger one for the skull, the smaller for the muzzle, making all the lines of the head parallel or perpendicular. This is expressed in the standard by:

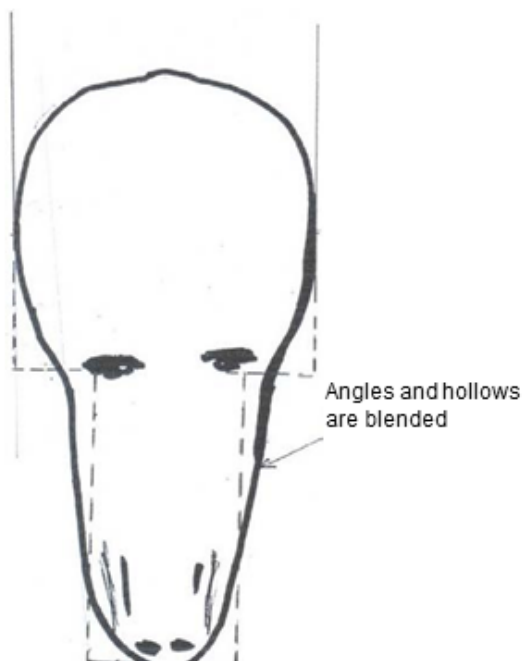
- Muzzle fairly square
- Flat skull
- Muzzle must not be sharp or receding

All these elements point to the importance of the chiseling in the Beauceron head, for if it does not appear, we are in the presence of a common head, which is not representative of the breed. (See Diagram A)

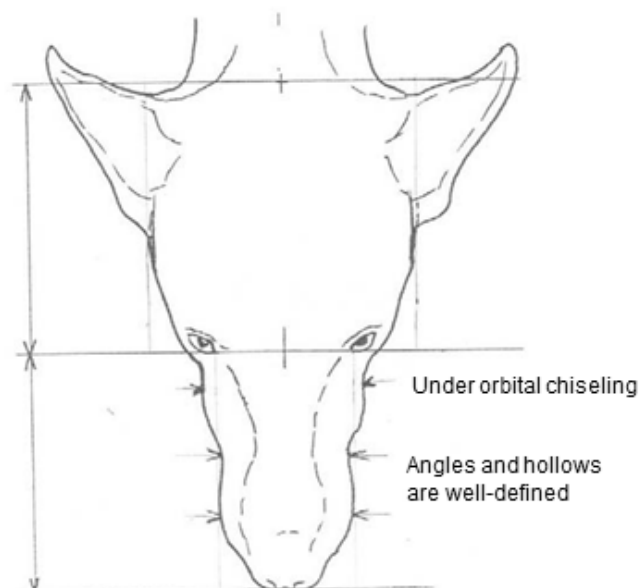
A head showing a short muzzle, concave profile of the head is not correct.

DIAGRAM A III. Chiseling

Ordinary Head:
Correct proportions but no chiseling



Excellent Head:
Correct proportions and chiseling



IV. The Eyes

Their shape is well described in the standard. We must penalize eyes that are pulled to the side and remind you of "Chinese eyes." The expression then becomes incorrect for a sheepdog, for a frank direct look cannot be obtained with a sidelong glance or slanted eyes or narrow set eyes.

1. Eye color for the black and tan coat:

- Dark chestnut. Both eyes are of the same color neither black, light, or yellow. Yellow is never the eye color of black dogs whatever the breed!
- Yellow is not a very light chestnut color: it is ANOTHER COLOR.

2. Eye color for the Harlequin coat:

- The two eyes can be blue, entirely or partially, BUT, when the iris is bicolor, the other color must exactly the same as the dark chestnut required for the black and tan dogs.

Partially yellow eyes cannot be allowed on Harlequin dogs, just as they are not for the black and tan dogs. It is very clear, yellow eyes will cause the dog to be rated "inadequate."

V. Ears

The problem lies with the natural ears. We have to examine the ear set and evaluate its texture (thin enough.) Like the cropped ears, they are not divergent, hanging low on the cheeks and they must measure half the length of the head. The ear set tends to project the ears forward. (See diagram B)

DIAGRAM B

V. The Ears

Ear styles

Left: Past cropped ear style no longer accepted in Europe

Right: uncropped natural ear



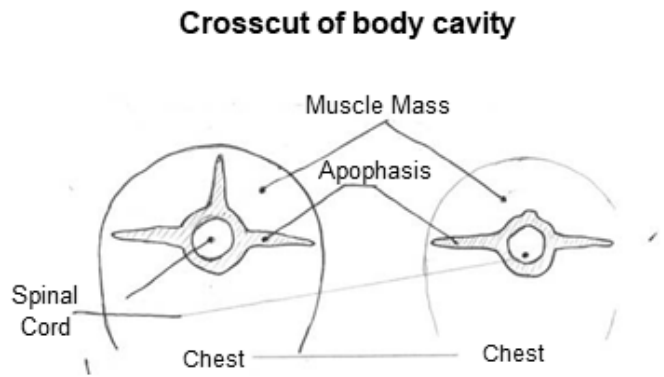
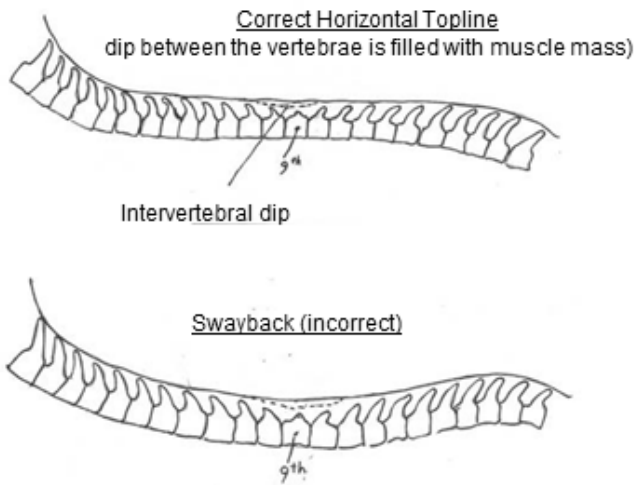
VI. Topline

It consists of the back and the loin. It is straight and horizontal from the withers to the iliac bone (beginning of the croup.) To achieve a correct topline, muscle mass must fill all the space between the vertebrae as they do not have apophyses of equal size. In fact they are angled in opposite directions, forward and backward. The point where their angulation changes is on the 9th dorsal vertebra which does not have an apophysis. It is also called the "anticlinal vertebra." The first eight vertebrae are angled forward, the last four along with the lumbar ones are slanted backwards. Muscles must fill the volume between the three apophyses of each vertebra. This prevents to notice a dip of the topline at the 9th vertebra. (See Diagram C)

This must not be confused with sway back, which is a general concave curvature of the back, and far more serious.

Conclusion: A sway back is a general drop of the spine, not at all the depression seen on the 9th vertebra of a dog lacking good muscling of the back.

DIAGRAM C VI. Topline



VII. The Chest

It must be oval, full; long never cylindrical not at all shaped like the keel of a boat. It blends into the flanks.

The floating ribs (11th, 12th and 13th) are long permitting good volume of the chest. Short floating ribs would be an important fault.

The chest shaped like a ship's keel is caused by the shape of the ribs and is an inherited fault. Therefore, take heed and avoid the transmission of this fault!

VIII. The Croup

It is not worth spending time on this problem. All judges easily recognize a croup that is too slanted and would change the hindquarter's angulation.

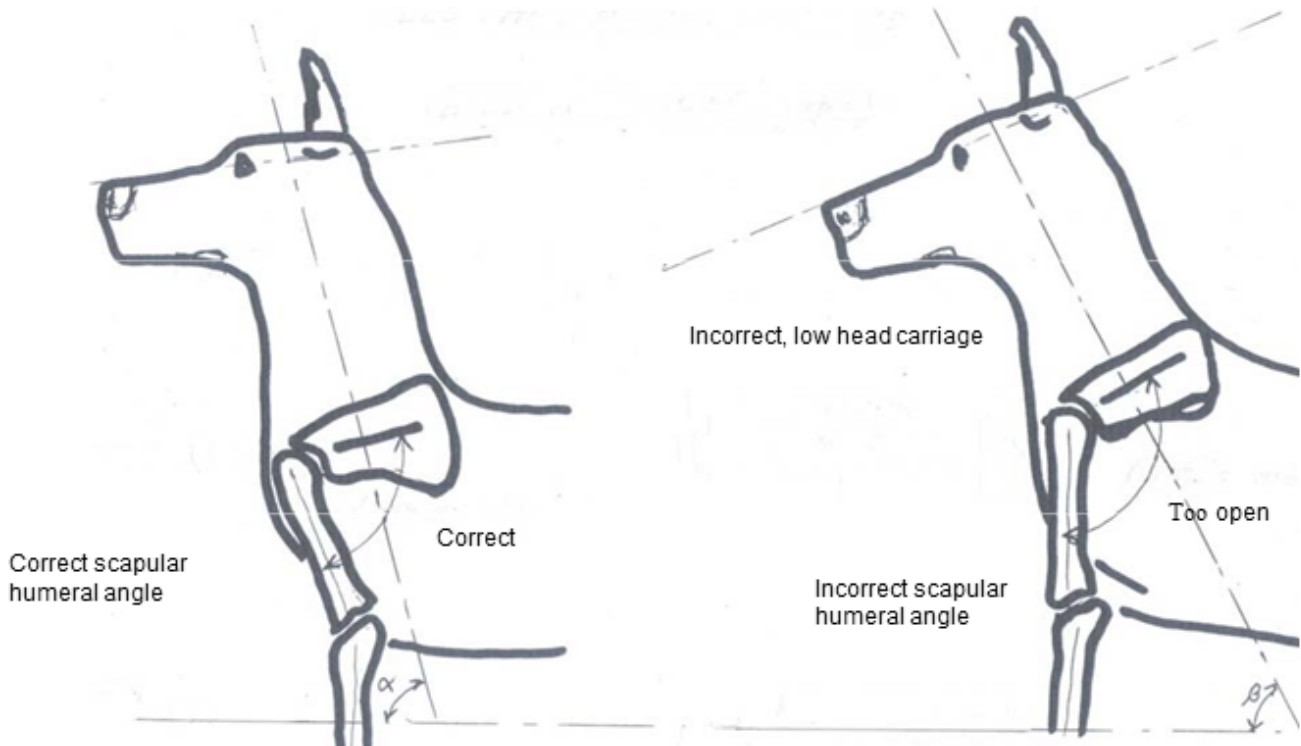
The Beauceron is a trotter, not a runner or a canterer.

IX. Angulations

As far as they are concerned and to complete what I was stating at the start of these comments, we must be very watchful. Too straight, they make the dog taller and characterize runners not trotters. Such angulations must be penalized. (See Diagram D)

IX. Angulations

Angles are intentionally exaggerated



X. The Tail

Many old judges would say: "a dog is a head and a tail!"

The tail must be strong and large at the base. A thin tail is the sign of a light skeleton, which is also an important fault.

The tail should be carried in the shape of a J, we must be tolerant with a high carriage, but it must never be carried above the topline or curved over the loin.

NB: Nevertheless, it is a fault, not as important as the faults of the head, but too much tolerance of a poor carriage generalizes a fault that is very difficult to correct after it has become a habit.

XI. The Feet

One of the main faults is when the feet are not aligned. We must always be watchful of this, because this fault is

repeated from parents to progeny.

Another fault is poor feet i.e. not tight, compact, in short flat feet.

NB: It is very important to examine feet in action, for it is possible to notice these faults when the dog is moving.

XII. The Coat

The markings' color is essential for the dog to be of good quality. Markings should be deep rust. Light markings must be penalized depending on the degree of lightness. This is well described in the standard.

Disappearance: It begins with the disappearance of the spots above the eyes. This is very serious because we are leaving the black and tan type. A dog that does not have the tan spots above the eyes is becoming entirely black. Such fault shows that the dog has lost the fundamental trait of the breed.

NB: Too invasive tan markings must be penalized, but the fault is less grave than their disappearance.

Undercoat: It is one of a sheepdog's traits. It must exist, even if it is thin. Too much undercoat is incorrect but less than it lacking. It is up to the breeder to keep an eye on this problem and choose his breeding stock wisely.

CONCLUSION:

All points covered in the standard have not been discussed in these comments, we did not want to write a "remake." In fact, a judge knows how to respect the standard when it comes to the teeth and the dewclaws, the Beauceron standard is precise on these points.

We have only highlighted the important point-sometimes with pyrotechnical explanations, which, without being specific traits of the breed, are nevertheless essential to judge a Beauceron without committing serious mistakes.

This text will give new judges – and older judges who will take the trouble to read it- guidelines to avoid overlooking main faults in judging the Beauceron.