



The Beauceron

Illustration of Standard

Outline

- History
- General appearance
- Head
- Topline and abdomen
- Tail
- Forequarters
- Hindquarters
- Coat
- Colors
- Gate
- Temperament
- Faults, Serious faults, disqualifications
- Examples of DQ's

Current issues in the breed

- Lack of substance
- Lack of angulation both in the front and rear
- Lack of pigmentation of lips and gums
- Incorrect shape or placement of eye
- Length of loin (too long in males and females)

History



- The Beauce shepherd is one of the oldest French breeds.
- The variety in shepherd dogs of the region resulted from differing needs in living, training and working ability as well as climate and habitat conditions.
- The Beauceron is of lupoid type - it is longer than tall.
- Writings dating back to Roman times, describe the purpose of a "shepherd dog" was above all as a defender of the herd against predators, and not a herding dog. These guarding traits can still be seen in today's Beauceron.
- Shepherds of the plains regions were first mentioned in writing by Abbe Rosier in 1809.
- In 1863, 13 lupoid-type black and tan dogs with erect ears were first exhibited in Paris, France. Undoubtedly, it was the first official appearance of what was to become the Shepherd of Beauce or Beauceron.

History



- The first short-coated sheep dogs were seen before 1898.
- These early Beaucerons somewhat resembled today's dogs. They had
 - finer, short-haired muzzles,
 - the ears were straight and short,
 - the hair half-long, hard, with a coarse undercoat.
 - rust markings above the eyes, under the jaw, on the chest and on their legs.
 - origin of the term "Bas-Rouge" or "red stockings".
 - The coat was primarily black, although there were dogs of all colors including entirely gray.

General appearance



The IDEAL Beauceron is

- rustic in its appearance - it is a farm dog,
→ It has not been scissored, clipped or shaved
- medium in all its proportions and
- well balanced.
- A solid dog of good height and
- well-muscled without heaviness or coarseness.
- Gives impression of depth and solidity without bulkiness.
- Exhibits the strength, endurance and agility required of the herding dog.
- Alert and energetic with noble carriage and frank and unwavering expression.



Size and proportion

Dogs



Bitches



- Preferred size is midrange for each sex.
- The length of body, measured from the point of the shoulder to the point of the buttock, is slightly greater than the height at the withers.
- Correct proportion is of primary importance, as long as size is within the standard's range.

Size and proportion - dogs

Dogs are

- Larger throughout - larger frame, heavier bone - than bitches.
- 25 ½” - 27 ½” at the withers

SERIOUS FAULT: lacking substance

DQ: over or under standard's range



Size and proportion - bitches

Bitches are

- distinctly feminine,
- without weakness in substance or structure.
- 24” - 26 ½ “ at the withers

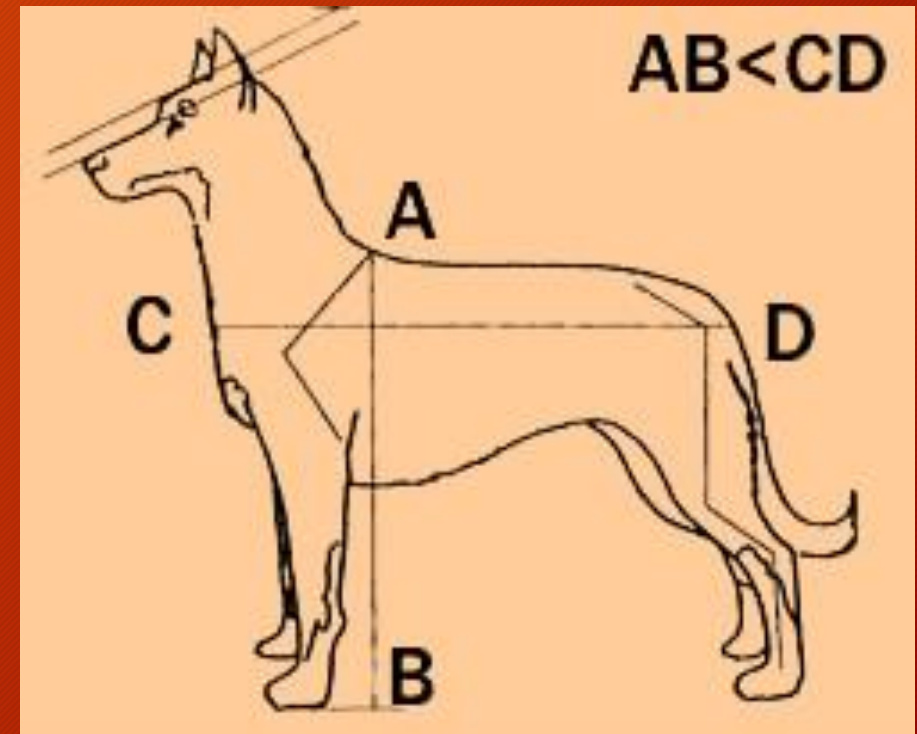
SERIOUS FAULT: lacking substance

DQ: over or under standard's range



Size and proportions - summary

- The LENGTH OF BODY - measured from prosternum to point of buttock (C-D) - is slightly longer than the height (measured at the point of the withers (A-B)).
- Bitches can be slightly longer.
- The Beauceron is medium in all its proportions.
- The breed is powerful, well built, well muscled, without signs of weakness or clumsiness.
- Specimen lacking substance should be severely penalized.
 - Beaucerons are slow to mature and young dogs will lack the chest and muscle development of adults. However, age-appropriate development is expected and dogs of any age must have good bone throughout.



DQ: dogs over or under size

Substance

vs

lacking substance



male



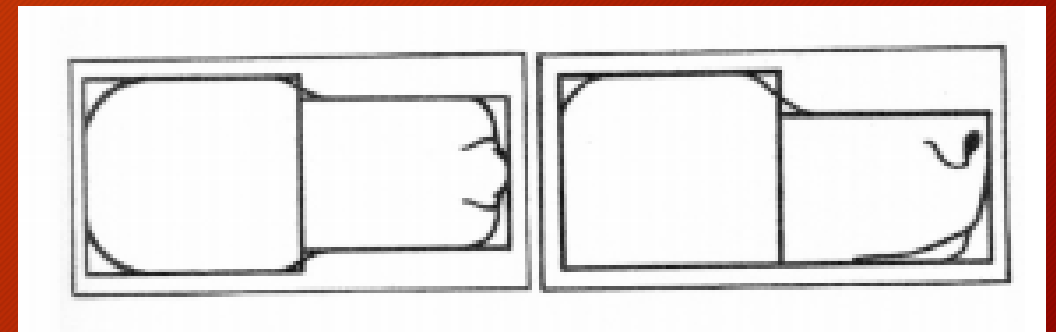
female



Head

EXPRESSION: The gaze is frank, alert, and confident.

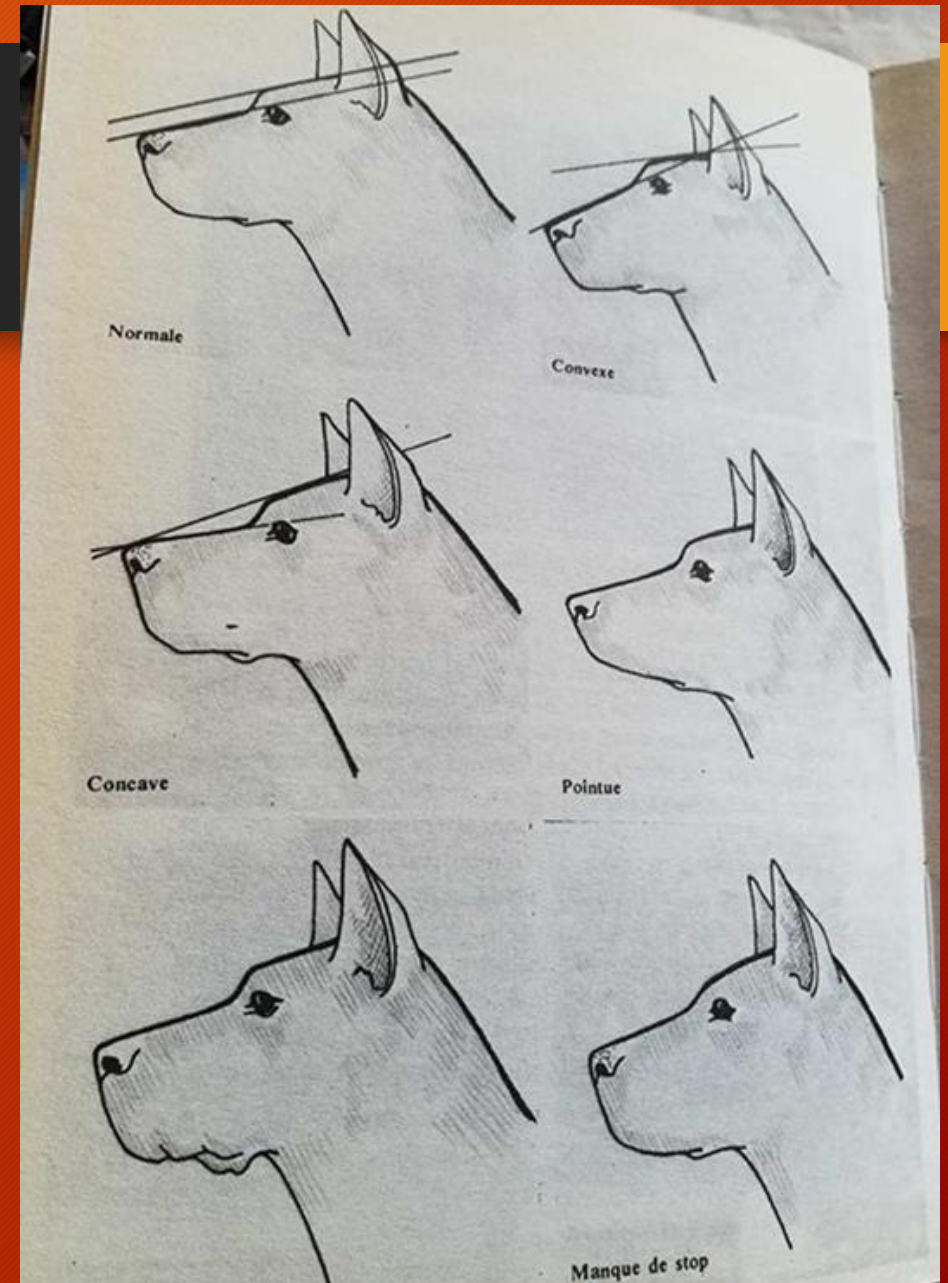
- long, well chiseled with harmonious lines, without weakness
- height and width of the head are each slightly less than half its total length
- **SKULL** and **MUZZLE** are of equal length
- **SKULL** is flat or slightly rounded near the sides of the head
- **MEDIAN GROOVE** is slightly marked and occipital protuberance is visible on the summit of skull
- **STOP** is slightly pronounced and equidistant from occiput to tip nose
- in proportion with body: measured from tip of nose to occiput head is ~ 40% of height at withers



Head

- **MUZZLE** must not be narrow, pointed, or excessively broad in width.
- **PLANES** - in profile top lines of skull and muzzle are parallel. The junction of the two forms a slightly pronounced **STOP** midway between occiput and tip of nose.
- **NOSE** is proportionate to muzzle, well developed, always black. In profile, it must be in line with the upper lip.
- **LIPS** are firm and always well pigmented. Upper lip overlaps lower lip without any looseness. At their juncture, lips form very slight but firm flews.

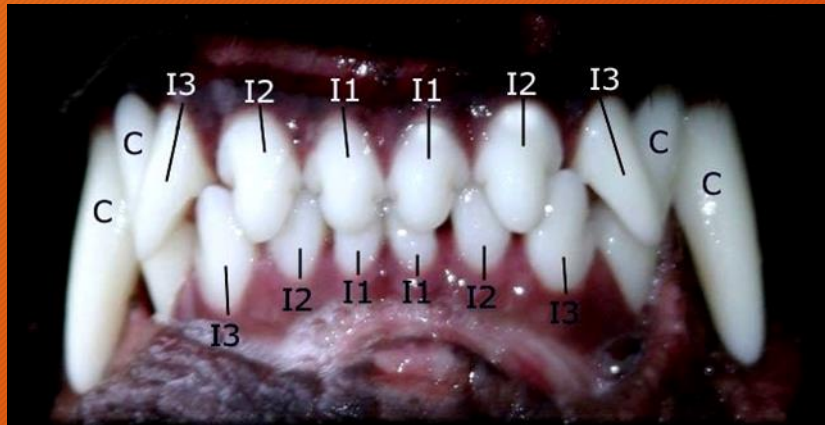
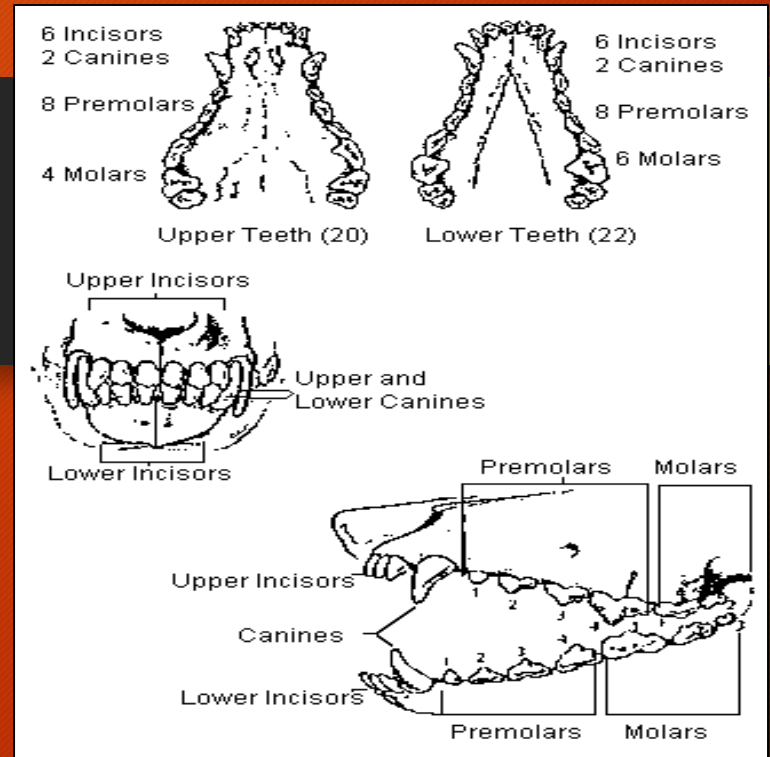
DQ: Split nose, nose color other than black or with unpigmented areas.



Teeth (and gums)

Affecting a dog's overall rating
(starting as Ex):
(P1: not included in count)
1 tooth missing = still EX
2 teeth missing = serious fault VG
3 teeth missing = DQ

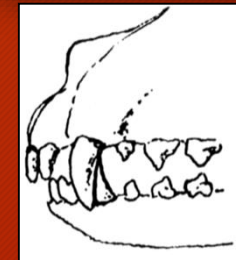
- A full complement of strong white teeth, evenly set, and meeting in a scissors bite.
- Gums - ideally - have dark/black pigmentation



DQ: Overshot or undershot with loss of contact; absence of three or more teeth (the first premolars not counting).



Level
Not faulted



Overshot
w/loss of contact
DQ



Undershot
w/loss of contact
DQ

Lips and gums

Excellent pigmentation
of lips and gums.



Head - male and female



There are no differences in head type and proportions between male and female Beauceron.

The standard states that “Bitches are distinctly feminine, but without weakness in substance or structure”.



Correct dog head type



Correct bitch head type



Incorrect head types



Too much stop



Insufficient stop



Convex planes

Eyes

CORRECT:

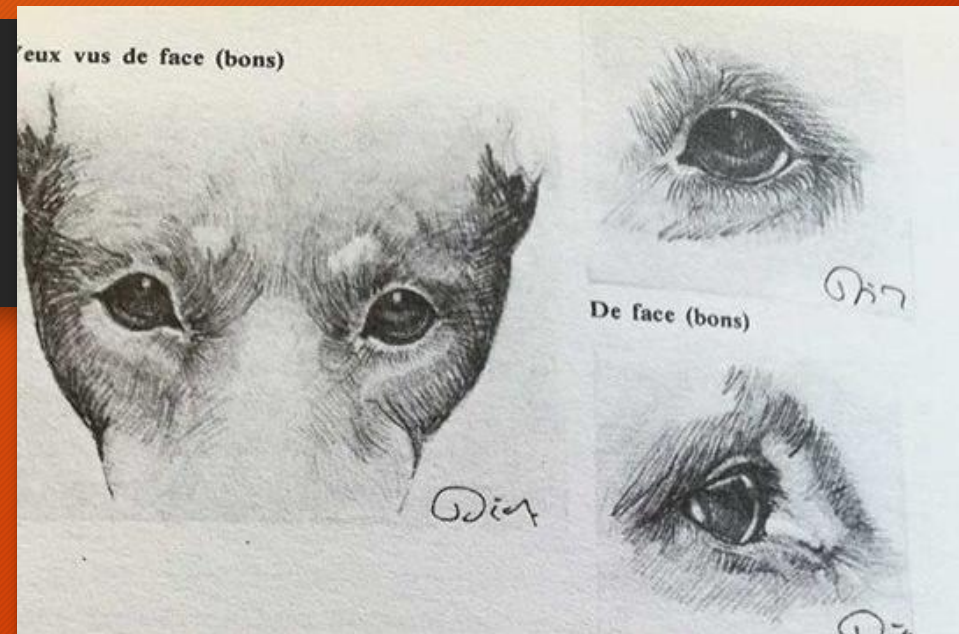
- horizontal and slightly oval in shape
- must be dark brown, never lighter than dark hazel

- for the harlequin, walleye is acceptable,

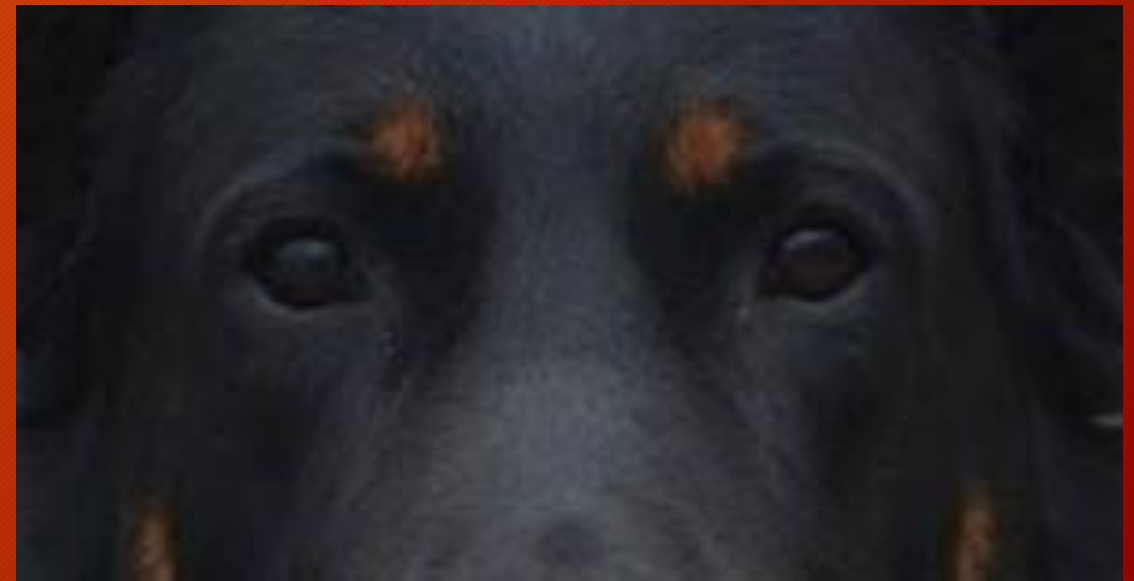
However:

If not walleyed, pigmentation must be as in black and tan.

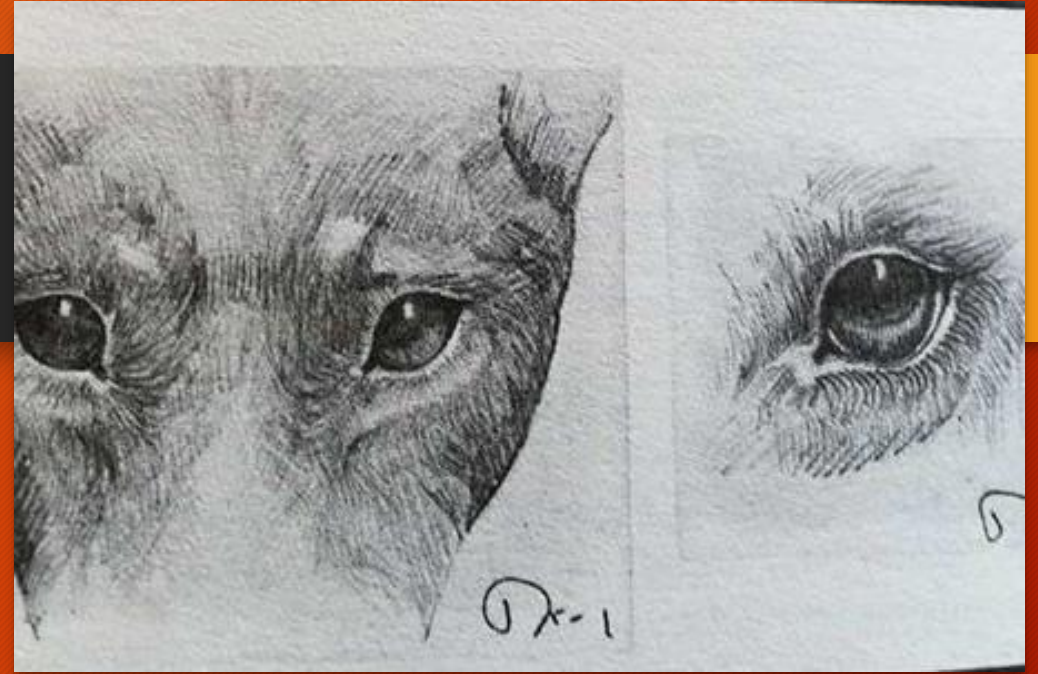
DQ: Yellow eyes. Walleye in the Black and Tan.



Correct shape, color and placement



Eyes



INCORRECT: oblique, "Chinese" eye



Eyes



INCORRECT: Eyes almond shaped.



Eye color

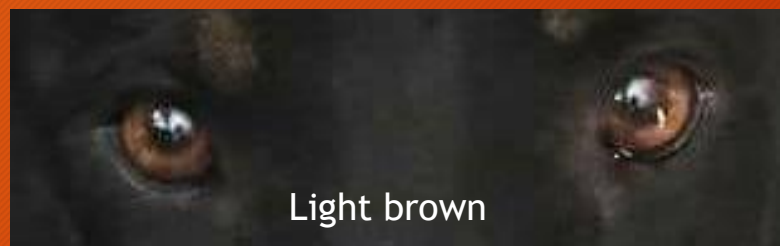
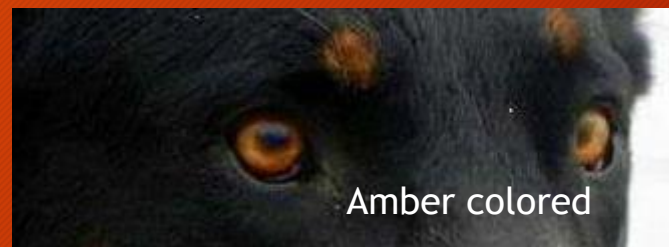
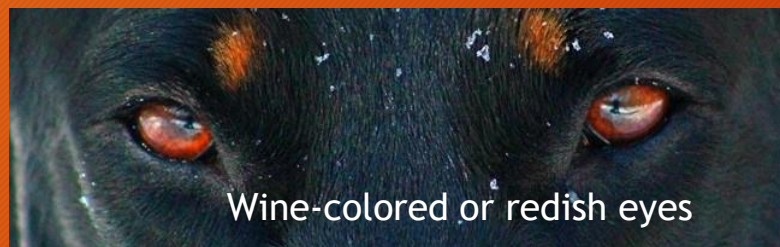
Ideal



Acceptable

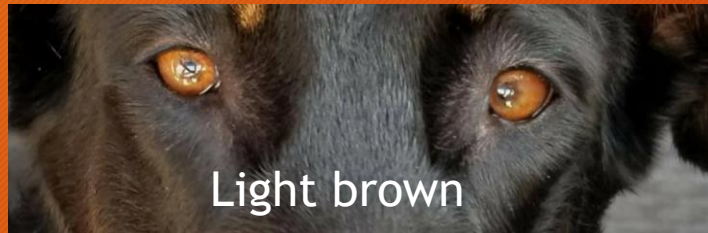


Faults

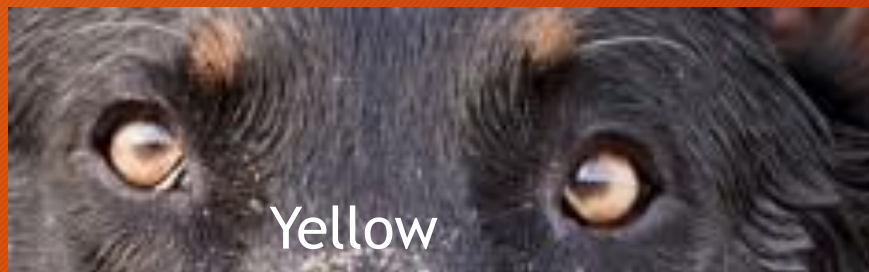


Eyes

Severe
fault



DQ



- Yellow is never the eye color of black dogs whatever the breed!
- Yellow is not a light chestnut color
→ It is another color!

Eye color - harlequin

- Harlequins ideally have dark chesnut eyes (like black & tan)
- Walleyes are acceptable in harlequins only and the blue eye must have adjacent merled coat.
- If an eye is bicolore, it is dark chestnut and blue.
- Eye colors deviating from the ideal are faulted like those in the black & tan.



Preferred eye in harlequin.



Walleye with associated merled coat around eye.

Ears

- Set high, and may be cropped or natural
- No preference to be given to either the cropped or natural ear.
- The cropped ear is man-made and is not part of the conformational quality of the dog.
- Ear set and the quality of ear leather are the only characteristics evaluated (beyond the description of the ear in the standard).

Ears

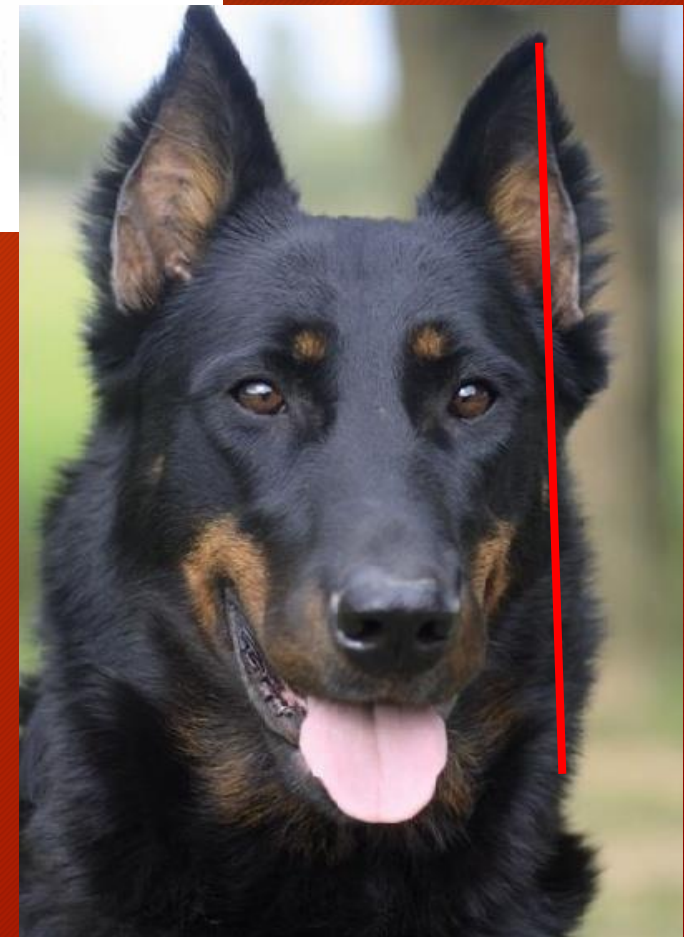
- Cropped ear is carried upright and is neither convergent nor divergent, pointing slightly forward.
- The well-carried ear is one whose middle falls on an imaginary line in prolongation of the sides of the neck.



Correct ear crop and set (elegant & rustic)



Incorrect ear crop and set



Ears

- natural ears are half pricked or drop-ears
- they stand off the cheeks
- natural ears are flat and rather short
- length is equal to half the length of the head.

DQ: Natural ears carried upright and rigid.



Natural ear examples of Fr. National winners



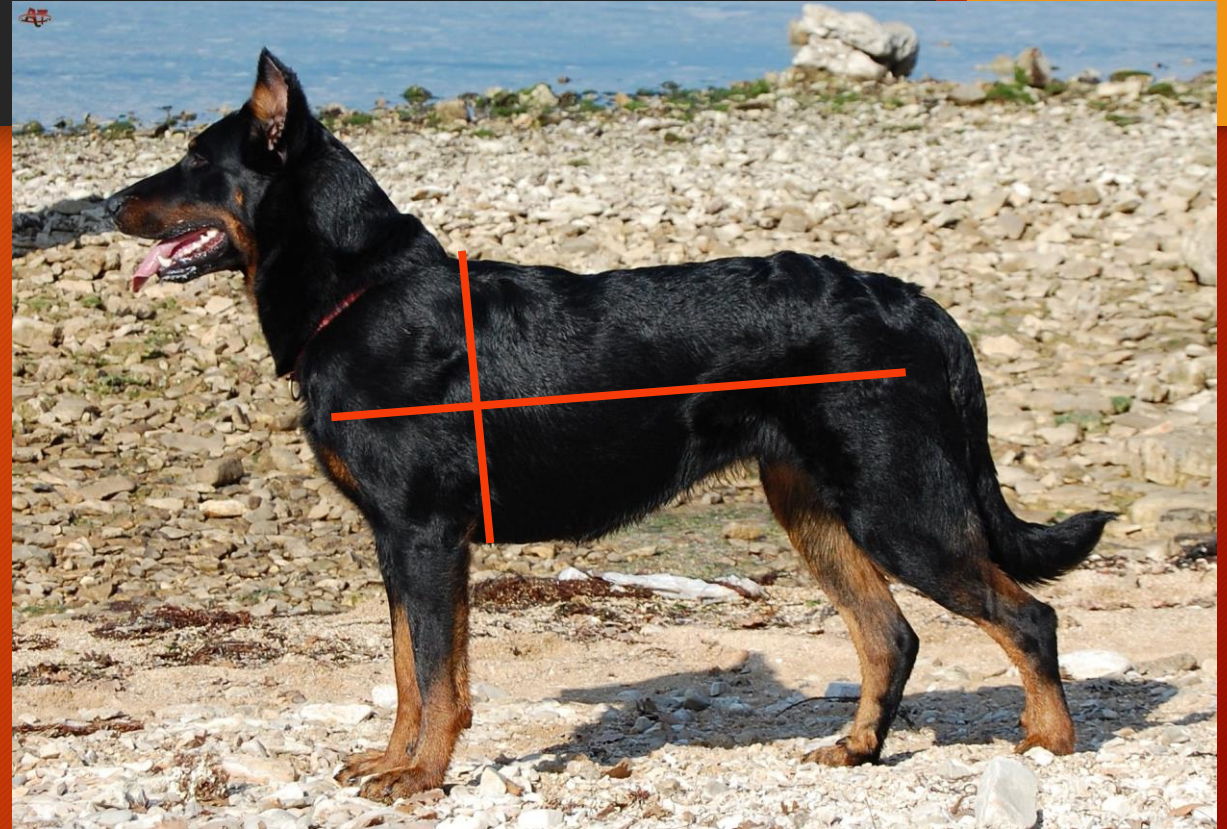
Neck, topline and body

- **NECK** is muscular, of good length, united harmoniously with the shoulders, enabling the head to be carried proudly while standing in an alert posture.
- **TOPLINE.** The back is straight, horizontal, and strong from the withers to the iliac. Withers are well defined. Point of hip is slightly higher.
- **LOIN** is broad, short and muscular.
- **CROUP** is well muscled and slightly sloped in the direction of attachment of tail.



Neck, topline and body

- **BODY.** Length of body from the point of the shoulder to point of buttock is slightly more than height of dog at the withers.
- **CHEST** is wide, deep, long, and descends to the point of the elbow. Girth is greater than the height at the withers by more than 20%.
- **RIBS.** Ribcage extends well back with long, flexible, and moderately curved ribs. Ribs 11, 12 and 13 are long, allowing good volume. Shortness in these ribs is an important fault.
- **ABDOMEN** is moderately drawn up but still presents good volume.



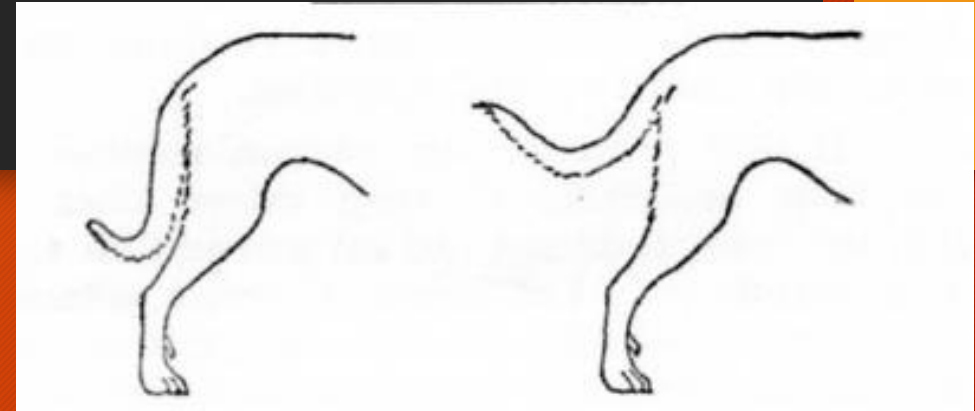
Excellent neck, topline and body



Neck, topline and body

- TAIL is evaluated in static AND motion
 - It is
 - strong at the base,
 - carried down, [bone] descending at least to the point of the hock,
- STATIC, it forms into a slight J
- IN ACTION, carried slightly elevated but can be carried higher, becoming an extension of the topline.
- Should not be curled.

DQ: Docked tail, or tail carried over the back.



Correct tail carriage
static

Correct tail carriage
in motion



Tail carriage in motion

Tail carriage
preferred and acceptable >>



acceptable

Tail carriage
Increase in fault >>



Forequarters

The construction of the forequarters is of the utmost importance, determining the dog's ability to work and his resistance to fatigue.

- **SHOULDERS** are moderately long, muscular but not loaded, with good layback.
- **FOREARMS** are muscular.
- **FOREARMS** and **PASTERN** are verticle (viewed from front and side)
- **FEET** are large, round, and compact with black nails. Pads are firm yet supple.



FOREQUARTERS FRONT VIEW



CORRECT



Incorrect
Pigeon-toed



Incorrect
Elbows out, pigeon-toed,



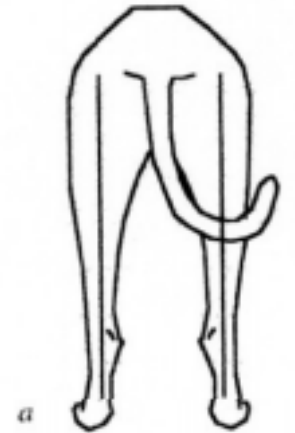
Incorrect
Elbows out, feet turned out

Forequarters

Correct front assembly



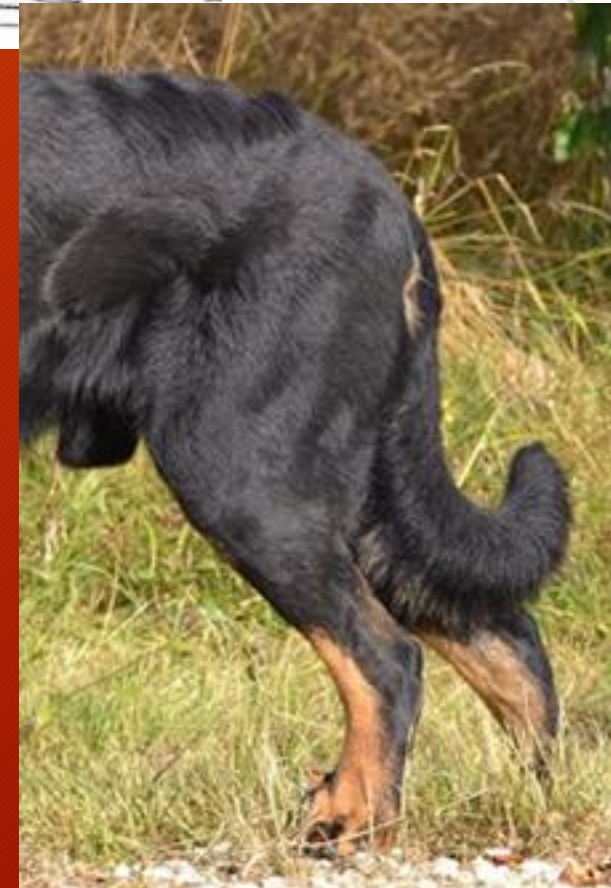
Hindquarters



Angulation of hindquarters is balanced with forequarters. Hindquarters are powerful, providing flexible, tireless movement. They are vertical when viewed in profile and from behind.

- **LEGS.** Thighs are wide and muscled.
- **HOCK JOINT** is substantial, not too close to the ground, the point situated roughly at $\frac{1}{4}$ the height at the withers, forming a well open angle with the second thigh.
- **METATARSALS** are upright, slightly further back than the point of the buttock. Viewed from behind, metatarsals are perpendicular to the ground and parallel to each other.
- **FEET** are large, round, compact, and the rear toes turn out very slightly.
- **DEWCLAWS.** Double dewclaws form well separated "thumbs" with nails, placed rather close to the foot. (Nail with pad must be present)

Disqualification: Anything less than double dewclaws on each rear leg.



Correct vs lacking angulation



Well angulated front and rear



Significant lack of angulated front and rear

Coat

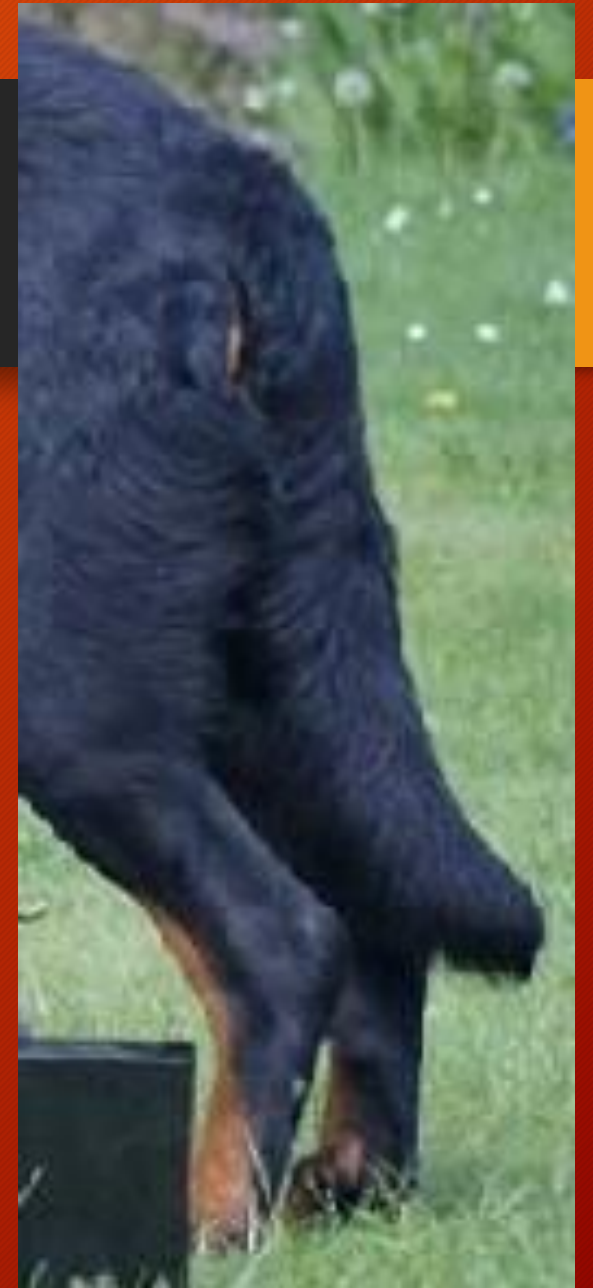
- **OUTER COAT** is 1¼" to 1½", coarse, dense and lying close to the body. It is short and smooth on the head, ears and lower legs. The hair is somewhat longer around the neck.
- **TAIL** and **BACK OF THIGHS** are lightly fringed.
- **UNDERCOAT** is short, fine, dense and downy, mouse gray in color and does not show through the outer coat.

The Beauceron is exhibited in its natural condition with no trimming.

DQ: Shaggy coat.



Hair on neck



Fringing on tail and thigh

Colors

BLACK AND TAN.

- black is very pure;
- tan markings are squirrel red;
- the markings are:
 - dots above the eyes;
 - on the sides of the muzzle, fading off on the cheeks, never reaching the underside of the ears
 - on the throat
 - two spots on the chest are preferred to a breastplate;
 - under the tail;
 - on the legs: markings extend from the feet to the pasterns, progressively lessening, though never covering more than 1/3 of the leg, rising slightly higher on the inside of the leg.

Some white hairs on the chest are tolerated.



Colors

GRAY, BLACK AND TAN (HARLEQUIN).

- Black and Tan base color with a pattern of blue-gray patches distributed evenly over the body and balanced with the base color, sometimes with a predominance of black. (Both sides of dog should be examined).
- Gray patches fade with age. This is normal and not penalized.

Disqualification: Any color other than Black and Tan or Harlequin.

Complete absence of markings.

Well-defined, quite visible white spot on the chest 1" in diameter or larger.

In the Harlequin: too much gray; black on one side of body and gray on the other; head entirely gray.



Excellent color distribution on head



6 months



4 years

Markings

Correct color and amount



Too fawn in color



Excessive amount muzzle and chest



Also, eyes this light are a serious fault.

Excessive black
>absence of any markings
must be severely faulted



Gait

Movement is fluid and effortless, covering ground in long reaching strides (extended trot).

Strong, supple movement is essential to the sheepdog.

In movement the head is lowered approaching the level of the topline.

Dogs with clumsy or inefficient gait must be penalized.



Temperament

The Beauceron has a frank approach and is self-assured; never mean, timid, or worried.

Although reserved with strangers, the character of the Beauceron should be gentle and fearless.

Any display of fear or unjustifiable aggression is not to be tolerated.



Faults, Serious faults, Disqualifications

- **FAULTS.** Any departure from the foregoing points should be considered a fault and the seriousness with which the fault should be regarded should be in exact proportion to its degree.
- **SERIOUS FAULTS.** Dogs lacking substance should be severely penalized. Dogs with clumsy or inefficient gait must be penalized. Any display of fear or unjustifiable aggression is not to be tolerated
- **DISQUALIFICATIONS.**
 - *Height outside of maximum or minimum limits.*
 - *Split nose, nose color other than black or with unpigmented areas.*
 - *Overshot or undershot with loss of contact; absence of three or more teeth (first premolars not counting).*
 - *Yellow eyes. Walleye in the Black and Tan.*
 - *Natural ears carried upright and rigid.*
 - *Docked tail, or tail carried over the back.*
 - *Anything less than double dewclaws on each rear leg.*
 - *Shaggy coat.*
 - *Any color other than Black and Tan or Harlequin.*
 - *Complete absence of markings.*
 - *Well-defined, quite visible white spot on the chest 1" in diameter or larger.*
 - *In the Harlequin: too much gray; black on one side of body and gray on the other; head entirely gray.*

Examples of DQs



Yellow eyes



Tweed

Tweed: tolerated in young dogs in place of gray; after first real coat change -> DQ
Dogs with tweed often have white patches present -> DQ at any age.



DQ white spots



Tolerated
(faulted)
white spots

Examples of DQ



Tail carried over the back.



Shaggy coat.
Yellow eyes.